

16-Port Gigabit Switch



GSW-1603

H/W Version: 2

Total Gigabit Ethernet Solution

LevelOne's GSW-1603 Gigabit switch provides 16 Gigabit ports for lightning fast data transfer across your network. Transfer large files in seconds for a notable improvement in work productivity and efficiency. The store-and-forward architecture filters errors and forwards packets in a non-blocking environment. Flow control ensures accurate data transmission and the 802.3x and backpressure flow control mechanisms provide flexibility for full and half duplex modes.

Save Power With LevelOne Green Technology

Active Link Detection: A LevelOne Green device can tell if there is activity on each individual LAN port. If a 16-port switch only has 10 active

devices connected to it, power is saved because no traffic is routed to the 6 inactive ports.

Cable Length Detection: The switch is able to detect the distance of the connected device and adjusts its power accordingly. For example, if you have a LevelOne Green switch a computer connected to a 10-meter cable will consume less power than a computer connected to a 100-meter cable.

Sleep Mode: The device will enter sleep/standby mode when the connected devices are powered down and no active links are detected. This helps save energy consumption during extended periods of network inactivity, such as nights, weekends and holidays.



1. LEDs
2. 10/100/1000 Mbps
3. External power socket

Key Features

- 16-Port Gigabit Switch for high-performance office networks
- Complies with IEEE 802.3ab,802.3u and 802.3 standards
- Supports Auto-negotiation and Auto-MDI/MDI-X
- Supports 9K Jumbo frame rate
- Provides 8K MAC address entries
- Large 32G switching bandwidth
- External power supply
- 10-inch rack-mountable with included mounts
- Save up to 49% power compare to non Green Switch with similar functions

Works well with



GNC-0105T
32-bit Gigabit Ethernet PCI Adapter



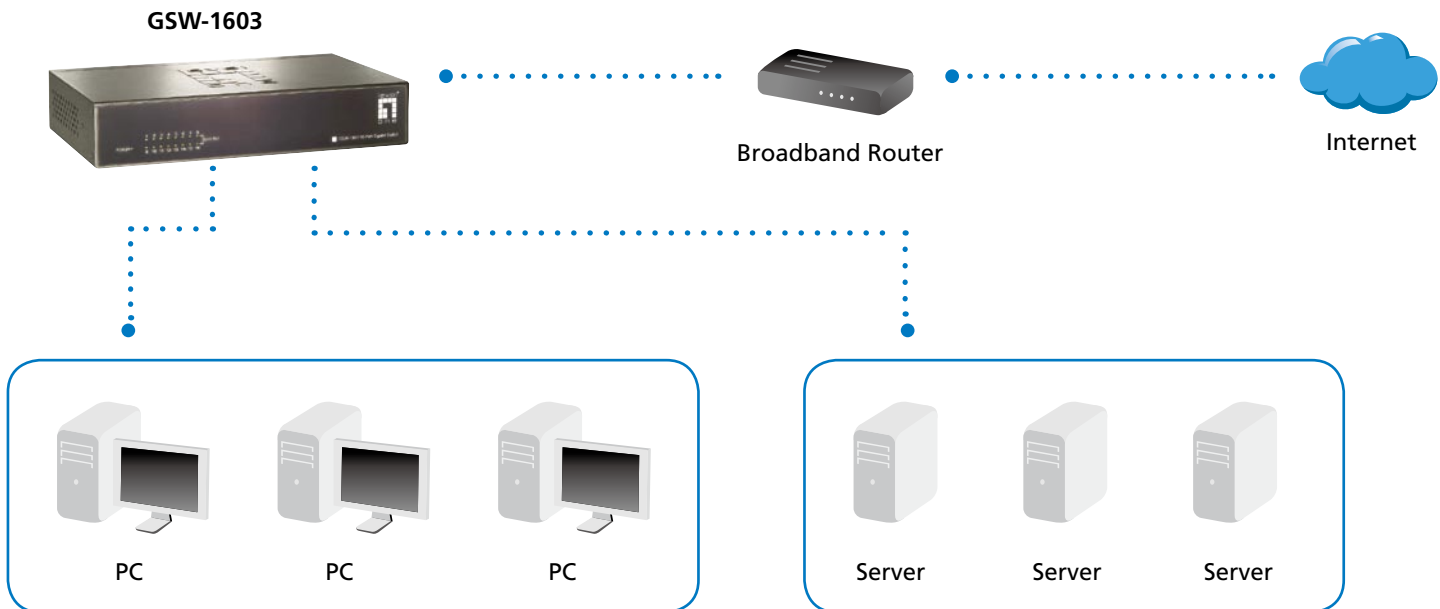
USB-0201
USB Gigabit Ethernet Adapter

Technical Specifications

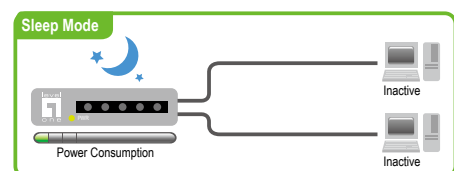
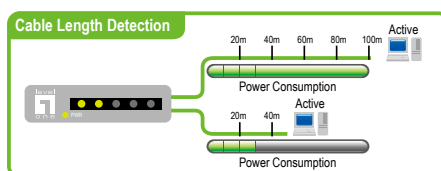
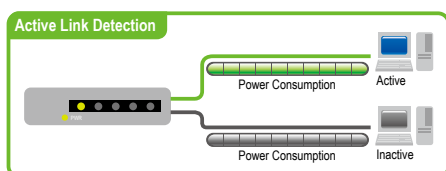
Standard Compliance
Compliant IEEE 802.3: 10BASE-T IEEE 802.3u: 100BASE-TX IEEE 802.ab: Gigabit Ethernet IEEE 802.3x Flow Control for Full-Duplex
Network Interface
Ports 16 x 10/100/1000 Mbps RJ-45 ports -Support auto MDI/MDI-X -Support auto-negotiation
Switch Architecture
Back-plane: 32 Gbps
Packet Buffer
500K bytes
MAC Address Table
8K entries per device
Transfer Rate
14,880 pps for 10 Mbps 148,800 pps for 100 Mbps 1,488,000 pps for 1000 Mbps
Frame Rate
9K bytes Jumbo frame

Physical Specifications
Power Supply 100 ~ 240VAC / 50~60Hz External Power
Operating Temperature and Humidity
0°C to 40°C 10% to 90% (Non-condensing)
LED
Power Link/Activity
Dimensions (L x W x H)
216mm x 133mm x 42 mm
Certification
FCC Class A, CE, VCCI Class A
Green Power Consumption
Power Consumption with 16 x 100 meters Cable Connected 12.36W Power Consumption with 16 x 10 meters Cable Connected 11.28W GSW-1603 Base Power Consumption (No Cables are Connected) 2.88W Non Green Switch Base Power Consumption (No Cables are Connected) 5.64W

Product Diagram



Power Saving by



Order Information**GSW-1603:** 16-Port Gigabit Switch**Package Contents**

GSW-1603 Gigabit Switch
DC Power Adapter (12V, 3A)
10 inch Rack-Mount Brackets
User Manual