

Signature
solutions ...



Cable Management

End-to-end solutions for
organizing cables and cords
throughout your network > > >

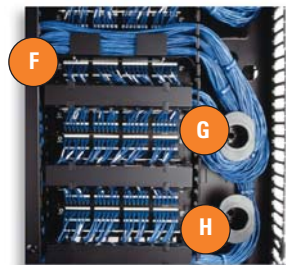
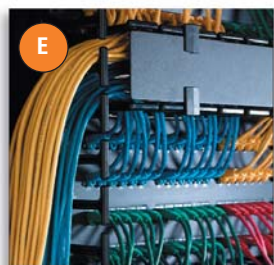


CHATSWORTH
PRODUCTS, INC.

Helping you

Organize. Store. Secure.SM

technology equipment ...



System Components

- A Double-Sided Vertical Cable Managers:** Provide a vertical pathway at the front and rear of the rack for premise cables and patch cords entering patch panels or fiber enclosures. Does not interfere with rack-mount space.
- B Single-Sided Vertical Cable Managers:** Provide a vertical pathway for patch cords entering active equipment. Does not interfere with rack-mount space and allows cooling air to circulate around the back of network equipment.
- C Double-Sided Horizontal Cable Managers:** Use above and below patch panels to control both premise cables and patch cords entering the front and rear of the patch panel.
- D Single-Sided Horizontal Cable Managers:** Use above switches to feed patch cords into the top of the switch.

Continued on page 3 >>>

Solution Overview

Cable management improves your network performance.

The majority of network problems are caused by loose connections. By properly managing your cables and cords, you can better maintain the quality of your information exchange.

Cable management products provide critical support for cable bundles. Defining cable pathways eliminates tangles and results in easier moves, adds and changes of your connections. The ability to trace cables from start to finish saves you time, money and headaches.

In addition, nicks, stretching, twisting, or sharp bends in cable cause changes to its physical properties, affecting signal quality and network speed. Cable management protects your cables against damages and maintains proper bend radii.

CPI provides an end-to-end solution to help you organize cables and cords throughout your network. Various styles of vertical and horizontal cable management provide a convenient cable run within, between and around racks and cabinets for better cable performance. In addition, CPI's high-quality, durable systems meet industry standards and provide lasting protection for your cable.



System Components continued from page 2

E Cable Management Fingers: Seamlessly transition cable from your rack-mount equipment. Patented 1 RMU finger openings align with the rack's RMU spaces, so cables connect exactly where they exit.

F Jumper Trays: Creates side-to-side pathways for patch cords.

G Saf-T-Grip® Reusable Cable Management Straps: Use for bundling cables for better organization and to prevent crushing or cinching of cable.

H Cable Spools: Use inside vertical cabling sections to take up cable slack. Particularly beneficial for fiber-optic cables.

I Radius Drops: Maintain proper cable bend as premise cables exit overhead cable runway into the side-mounted vertical cable managers.

Fast Fact

Custom Products

New products often begin as customer requests. CPI can customize a solution based on your needs and requirements. Simply call Technical Support at 800-834-4969.

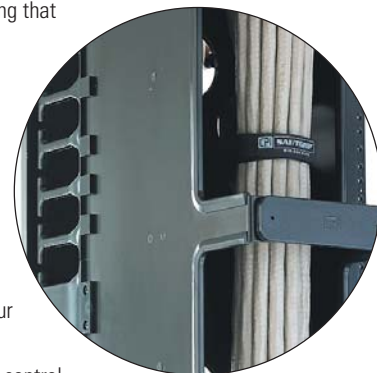
Why Choose CPI?

CPI is the leading provider of structural support systems and an innovator in cable management. Benefits of CPI Cable Management Systems include:

Industry Leadership

CPI cable management offers superior specifications, ensuring that your installation meets or exceeds industry standards.

- Cable management fingers, with standard and extended depths, have smooth, rounded edges to protect cables from tears and stretching.
- Patented 1 RMU spacing of the finger openings align with RMU spaces on the rack to provide a seamless transition of cables.
- Horizontal and vertical cable managers also align perfectly with each other in the front and back, making your installation organized and attractive.
- Cable Spools, particularly beneficial for fiber-optic cables, control slack while maintaining cable bend requirements.



High Quality

CPI products are sturdy, strong and durable.

- Cable managers are formed from sheet aluminum, making them strong but lightweight.
- Composite materials on the cable managers, such as the cable fingers and door latches, are safe for use in plenum areas and will not break or deform.
- Hinged doors or covers stay on for an attractive installation but easily open to provide access to cables.
- High-quality features ensure that you can run large cable bundles without worrying about damaging the cables or the cable management system.

Reliable Service & Information

CPI will respond to your needs quickly.

- Knowledgeable salespeople will perform a site survey and provide recommendations or on-site product evaluations.
- Customer Service, toll-free at 800-834-4969, will answer your questions, assist with ordering and resolve issues after delivery.
- The CPI Website offers comprehensive product and company information. Visit www.chatsworth.com.



Technical Support

You don't need to be a product expert.

- CPI Technical Support offers free layout services to help you configure your installation based on your equipment list and room dimensions. You will receive drawings and a Bill of Materials to explain the proposal.
- Design tools are available for your use on the CPI Website, www.chatsworth.com/designtools.

Fast Availability

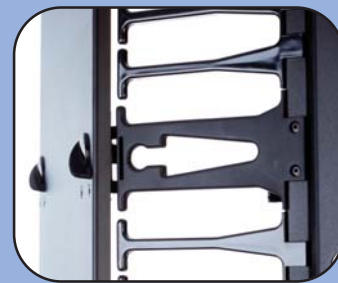
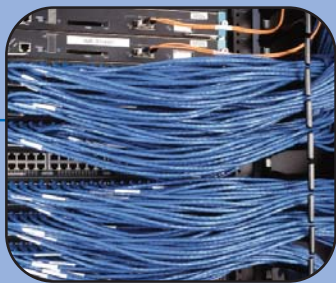
CPI products are available through local, national and international stocking distributors.

- To find a CPI Authorized Distributor or other purchasing options, call Customer Service at 800-834-4969 or visit the CPI Website, www.chatsworth.com/howtobuy.

Applications

Extended Fingers

For More Cable Capacity



The most direct pathway for cable is the best pathway for cable. CPI's patented cable management fingers, with 1 RMU spacing, align with the rack's RMU spaces for a seamless transition of patch cords or cables from your rack-mount equipment. The large cable opening and extra finger depth allow large bundles of cables to be easily managed. This solution is ideal for installations involving modular switches that must be cabled from one side or with angled patch panels. CPI extended fingers are integrated into vertical and horizontal managers including the MCS Master Cabling Section, CCS Combination Cabling Section, Global Vertical Cabling Section, Enhanced Vertical Cable Manager for Cabinets and Universal Horizontal Cable Manager. The rack-mountable Extended Fingers Bracket provides a retrofit solution.

Cable Management Fins

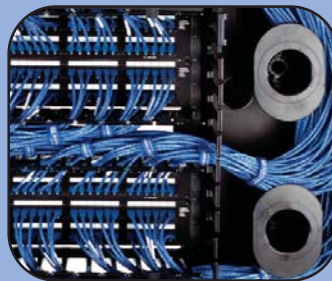
For High-Density Patching



CPI's High Density Patching Frame utilizes integrated cable fins as an alternate open method of cabling. Instead of controlling cables in a closed trough along the side of the rack, cable fins are integrated into the rack and extend to the rear, providing distinct vertical pathways for cables. This arrangement allows cables to fan neatly into each rack space and provides a high level of organization with easier access to cables than similar deep-channel rack alternatives. This solution is ideal for a high density of patch panels, especially where floor space is limited. CPI's High Density Patching Frame offers rack mounting with integrated vertical and top cable management in one convenient and cost-competitive package.

Cable Spools

For Slack Management & Bend Radii



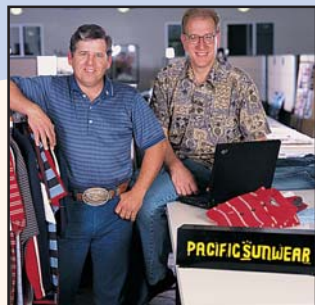
Patch cords are made in certain standard lengths. The distance between your connection points will vary, resulting in different amounts of cable slack. Cable spools, especially useful for fiber or Cat 5e/6 cables, help you take up slack, preventing cables from becoming tangled — or even worse — twisted, crushed, crimped or bent sharply. In addition, spools create smooth bends around turns to help maintain cable performance. Cable spools can be mounted inside any CPI vertical cabling section and on the High Density Patching Frame.

Fast Fact

White Paper

For more information about cable management standards and applications, read CPI's White Paper at www.chatsworth.com/cablemanagement.

Success Story: The Next Big Wave



Dwayne Russell, PacSun's Director of Technical Services, and Jim Dorris, Enterprise Communications Architect

Company: Pacific Sunwear in Anaheim, Calif., an \$800-million specialty retailer of casual apparel, beachwear, footwear and accessories.

Situation: From day one, when its first California surf shop opened in 1980, PacSun has been focused on catching all the great waves. "We're constantly looking for what's new," says Greg Weaver, chairman and CEO of PacSun.

Why CPI: To accomplish his goal, Russell chose the comprehensive family of structural support products offered by Chatsworth Product, Inc. "CPI has made cable management so much easier for us," Russell says. He cites CPI's 10-inch MCS Master Cabling Section as a perfect example. "I'll never use [another manufacturer] again," he says. "CPI's 10-inch MCS is wider, it opens from either side — not just the front — and it uses all the same parts ... just another way CPI makes organizing the wiring on our racks all the easier."

The Result: PacSun's completed network includes three DS3 connections, multiple IBM AS/400s, PC and Mac servers, a wireless network, hacker detection, continuous power backup and more than 500,000 feet of Cat 6 cable. To hold the varied equipment, PacSun installed CPI 19-inch Standard Racks, MegaFrame® Cabinets, cable management products and cable runway.



Being on the cutting edge of fashion and business also meant needing a leading communications systems infrastructure. A few years ago, PacSun installed a super-network at its new facilities — a 300,000-square-foot distribution center and 181,000-square-foot corporate headquarters. The network needed to support hundreds of workstations, distribution, stores and outlets as well as an expansion to 1,500 more stores.

"CPI has made cable management so much easier for us. I'll never use [another manufacturer] again."

In addition to capacity and performance, PacSun wanted cleanliness — a "sterile environment," says Dwayne Russell, PacSun's director of technical services.

Who would have thought that a quaint little surf shop (where most of the customers didn't even wear shoes) would be the birthplace of such a sophisticated, worldwide retail empire?

Read the full story at www.chatsworth.com/cablemanagement.

The Global Standard Pack

Standard Rack
+ Global Vertical Cabling Section
in One Package

> Standard Rack

- 19"-wide Two-Post System
- 45 RMU
- 750 lb load rating
- RMU markings on rack channels
- UL Listed

> Global Vertical Cabling Section

- Single-Sided 7'H trough
- Expandable to double-sided system
- Patented 1 RMU cable openings
- Snap-on, hinged cover included



Save time and money with the Global Standard Pack

The Global Standard Pack combines CPI's industry-leading Standard Rack with the easy-to-use, cost-effective Global Vertical Cabling Section. Get one convenient package — at a savings of up to 28%.

Comply with industry standards.

UL Listed rack complies with industry safety standards and bid specifications. In addition, CPI's composite cable management fingers meet various requirements, including EIA/TIA bend radius and UL 94V-0 fire rating.

Save time, minimize errors.

RMU markings on rack simplify equipment installation, so you can specify mounting locations without measuring or counting holes.

Stay aligned. Patented cable guide fingers spaced at 1 RMU intervals create seamless cable transitions from your rack-mount space.

Hide and secure cables. A sturdy snap-on, hinged cover is included for each cabling section, resulting in a closed, finished appearance.

Customize your installation.

Choose between packages with 3.65"W or 6"W cabling sections. Two cabling sections can be used either on both sides of the rack or installed back-to-back for a double-sided system. Cabling sections have seven 2.5"-diameter pass-through ports. Add more vertical and horizontal cabling sections to suit your needs.

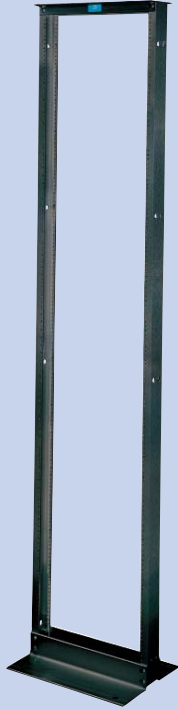


The new Global Standard features the GVCS and a Standard Rack in one box.

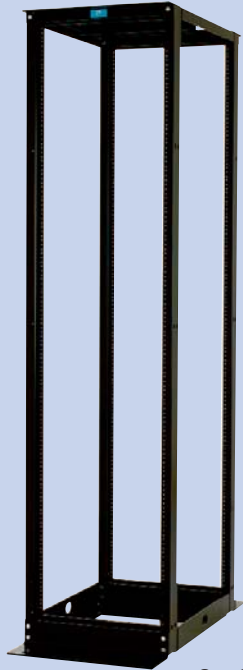
Build Your Own System: Open-Mount

Use the products on this page to create a cable management system with a two-post or four-post open frame.

Step One
Choose your two-post or four-post open rack.



Standard Rack



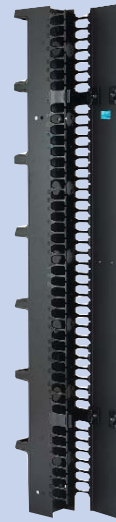
QuadraRack™ 4-Post Frame

Step Two
Select your cabling sections.



MCS Master Cabling Section
Enhanced!
CPI's most feature-rich vertical manager. Provides patented cable management fingers aligned with each rack-mount space. The sturdy door/cover has a handle and mechanical latch that locks the door in a closed position. Available in single- and double-sided versions in several sizes including a new 12"-wide version for high cable capacity.

VCS Vertical Cabling Section
An open cable trough with easy-to-use, spin-open latches for organization of large cable bundles. Available in single- and double-sided versions in several sizes. Cover and snap-on Finger Snaps™ Cable Guides are available as accessories.



CCS Combination Cabling Section
Enhanced!
A double-sided alternative that combines an MCS front with a VCS rear. Allows cables to exit into each rack-mount space on the front side of the rack but is mostly open on the reverse side for larger cable bundles. Available in several sizes. VCS accessories may be used with CCS.

Global Vertical Cabling Section
CPI's most cost-effective vertical manager. Provides patented cable management fingers aligned with each rack-mount space. Includes a snap-on, hinged cover. Available in single- and double-sided versions in several sizes. Alternately, a low-cost cable ring accessory similar to VCS can be added to the rear.

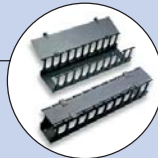


Step Three
Add horizontal cable managers.

Universal Horizontal Cable Manager Double-Sided
Use above and below patch panels to guide cables directly to the connection.



Universal Horizontal Cable Manager Single-Sided
Use above network switches to guide cables directly to the connection.

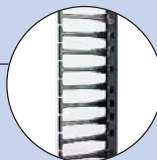


Jumper Trays
Creates side-to-side pathways for patch cords.



Step Four
Accessorize.

Extended Fingers Bracket
Use alongside network switches to guide cables into each rack-mount space.



Cable Spools
Use inside vertical cabling sections to take up patch cord slack. Required when managing fiber.

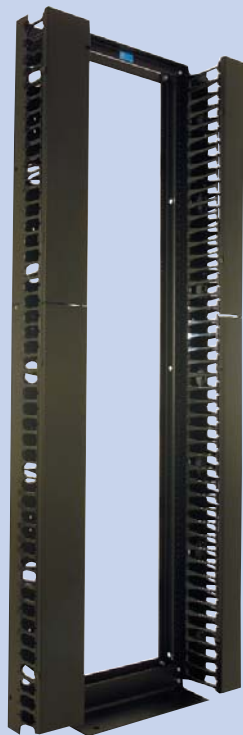


Saf-T-Grip® Reusable Cable Management Strap
Loosely bundle and secure cables to prevent cable damage.



Build Your Own System: Pre-Packaged

CPI offers pre-packaged systems that combine an open frame with cable management. Each solution fits a different type of application.



The Global Standard Pack

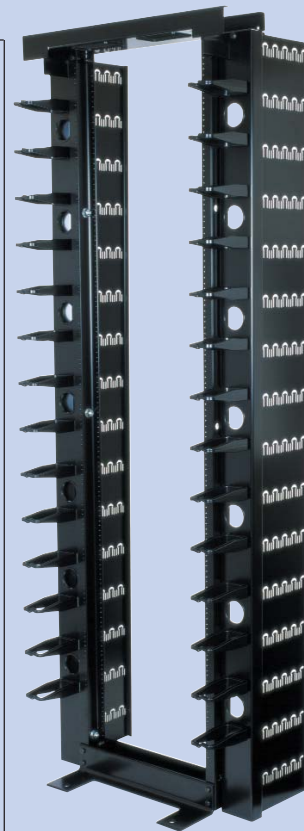


A versatile, low-cost cable management solution that will work for most applications in small networks. It includes a CPI Standard Rack plus one or two Global Vertical Cabling Sections in a single package — saving time and money. The cabling sections may be used on one or both sides of the rack and facing the front or the rear, allowing configurations that support patch panels, fiber enclosures, network switches, computers or a mix of equipment.

Note: You can also add Horizontal Cable Managers and accessories shown on page 6.

High Density Patching Frame

A rack with integrated cable management designed to support a high density of patch panels. Each cable fin supports five bundles of 96 cables each. This product is an excellent alternative to deep-channel racks, providing better organization and access to cables.



110 Customizable Frame

A main distribution frame that supports high-density 110-style terminating blocks. Moveable cable rings and brackets allow the user to create custom pathways for jumper cables. Available single- or double-sided.



Fast Fact

eNewsletters

You can stay informed about industry news, standards and trends as well as CPI's latest products, services and solutions by subscribing to free eNewsletters at www.chatsworth.com/eNews.

Build Your Own System: Enclosed

Use the products on this page to create a cable management system within your enclosed cabinet.

Step One
Choose your CPI cabinet.



Step Two
Consider your vertical cabling needs.

Vertical Cable Manager
All CPI Cabinet Systems have integrated cable management space and include one pair of vertical cable managers with rings. Cable managers can be adjusted front-to-rear to align with equipment. Add more cable managers to create multiple cable pathways.

Vertical Cabling Ring Accessory Kit
Use the ring kit to double the capacity of an existing cable manager. Every CPI Vertical Cable Manager can provide multiple cable pathways.

Rings shown on cable section.

Step Three
Add horizontal cable managers.

19" Horizontal Wire Management Panel
An open alternative to the Universal Horizontal Cable Manager. Use above and below patch panels and switches.



Rack Cabling Manager
Small horizontal manager, ideal for supporting one or two patch panels.



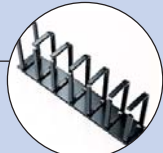
Wide Enhanced Vertical Cable Manager *New!*
Add to a 23"-wide MegaFrame Cabinet to provide additional cable capacity for fiber and copper cables. Provides by-RMU cable feed for patch cords. Includes a snap-on cover. To use this option, you must convert rails to 19" width by using the 23"-19" Rail Adapter Kit.



Horizontal Cable Tray
Use inside MegaFrame® to provide a side-to-side pathway for cables. Attaches to the cabinet frame and does not use rack-mount space. Sold as a kit, two each included.



Large Horizontal Ring Panel
Use above modular network switches to guide cables into vertical module cards.



Front-to-Back Cable Manager *New!*
Provide a front-to-back pathway for cables transitioning between switches and computers. Use between two Enhanced Vertical Cable Managers in MegaFrame Cabinets. Telescopes to match the distance between front and rear Enhanced Vertical Cable Managers.

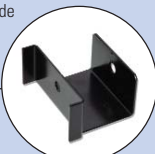


Narrow Enhanced Vertical Cable Manager *New!*
Add to a MegaFrame Cabinet to provide by-RMU cable feed for fiber and copper cables. Add to a 19"- or 23"-wide cabinet. Includes a snap-on cover.



Step Four
Accessorize.

23"-19" Rail Adapter Kit
Allows 19"-wide equipment to be placed within a 23"-wide MegaFrame Cabinet. Use with Wide Enhanced Vertical Cable Manager to create a 19"-wide high-density cable solution within the MegaFrame Cabinet System.



Saf-T-Grip® Reusable Cable Management Strap
Bundle and secure cables to prevent cable damage.




Ordering Information

On this page, you can find part numbers for all the solutions you've seen in this brochure; however, this page does not provide a complete list. For example, all part numbers indicate black products. Other colors and choices may be available. Please refer to the CPI Mini-Catalog, call Technical Support at 800-834-4969 or visit www.chatsworth.com for complete ordering information.



Build Your Own System: Open-Mount (As Shown on Page 6)

STEP 1: CHOOSE YOUR TWO-POST OR FOUR-POST OPEN RACK	
Two-Post Racks	
55053-703	Standard Rack, 19"W x 7"H x 3"D, 15"D base, 45 RMU, 1000 lb load
66353-703	6" Deep Rack, 19"W x 7"H x 6"D, 18"D base, 45 RMU, 1000 lb load
66383-703	6" Deep Rack, 23"W x 7"H x 6"D, 18"D base, 45 RMU, 1000 lb load
66363-703	6" Deep Rack, 35"W x 7"H x 6"D, 18"D base, 45 RMU, 1000 lb load
46353-703	Universal Rack (not pictured), 19"W x 7"H x 3"D, 15"D base, 45 RMU, 1500 lb load
QuadraRack™ 4-Post Frame	
50120-703	QuadraRack 4-Post Frame, 19"W x 7"H x 29"D, 41"D base, 45 RMU, 2000 lb load
STEP 2: SELECT YOUR VERTICAL CABLING SECTION	
Master Cabling Section (MCS)	
30091-703	MCS, Single-Sided, 4.4"W x 7"H x 8.08"D
30092-703	MCS, Single-Sided, 6"W x 7"H x 8.08"D
30093-703	MCS, Single-Sided, 10"W x 7"H x 8.08"D
30094-703	MCS, Double-Sided, 4.4"W x 7"H x 16.15"D
30095-703	MCS, Double-Sided, 6"W x 7"H x 16.15"D
30096-703	MCS, Double-Sided, 10"W x 7"H x 16.15"D
MCS With Extended Fingers	
40092-703	MCS with Extended Fingers, Single-Sided, 6"W x 7"H x 10.62"D
40093-703	MCS with Extended Fingers, Single-Sided, 10"W x 7"H x 10.62"D
40094-703	MCS with Extended Fingers, Single-Sided, 12"W x 7"H x 10.62"D
40095-703	MCS with Extended Fingers, Double-Sided, 6"W x 7"H x 10.62"D
40096-703	MCS with Extended Fingers, Double-Sided, 10"W x 7"H x 10.62"D
40097-703	MCS with Extended Fingers, Double-Sided, 12"W x 7"H x 10.62"D
Vertical Cabling Section (VCS)	
11730-703	VCS, Single-Sided, 3.65"W x 7"H x 6.38"D
11374-703	VCS, Single-Sided, 6"W x 7"H x 6.38"D
12096-703	VCS, Double-Sided, 3.65"W x 7"H x 12.75"D
11729-703	VCS, Double-Sided, 6"W x 7"H x 12.75"D
Combination Cabling Section (CCS) - Standard Fingers	
30161-703	CCS, for 3"D Racks, 3.65"W x 7"H x 12.24"D
30162-703	CCS, for 3"D Racks, 6"W x 7"H x 12.24"D
30163-703	CCS, for 3"D Racks, 10"W x 7"H x 12.24"D
CCS With Extended Fingers	
40098-703	CCS with Extended Fingers, 6"W x 7"H x 14.94"D
40099-703	CCS with Extended Fingers, 10"W x 7"H x 14.94"D
40100-703	CCS with Extended Fingers, 12"W x 7"H x 14.94"D
Global Vertical Cabling Section	
12831-703	GVCS, Single-Sided, 6"W x 7"H x 6.76"D
12833-703	GVCS, Single-Sided, 6"W x 7"H x 9.30"D
12830-703	GVCS, Single-Sided, 3.65"W x 7"H x 6.76"D
12832-703	GVCS, Single-Sided, 3.65"W x 7"H x 9.30"D
14831-703	GVCS, Double-Sided, 6"W x 7"H x 13.52"D
14830-703	GVCS, Double-Sided, 3.65"W x 7"H x 13.52"D
STEP 3: ADD HORIZONTAL CABLE MANAGERS	
Double-Sided Universal Horizontal Cable Manager	
30529-719	Universal Horizontal Cable Manager, Double-Sided, 19"W x 11.73"D x 1 RMU
30530-719	Universal Horizontal Cable Manager, Double-Sided, 19"W x 11.73"D x 2 RMU
30531-719	Universal Horizontal Cable Manager, Double-Sided, 19"W x 11.73"D x 3 RMU
Single-Sided Universal Horizontal Cable Manager	
30139-719	Universal Horizontal Cable Manager, Single-Sided, 19"W x 4.96"D x 1 RMU
30130-719	Universal Horizontal Cable Manager, Single-Sided, 19"W x 5.14"D x 2 RMU
30131-719	Universal Horizontal Cable Manager, Single-Sided, 19"W x 5.14"D x 3 RMU
Jumper Trays	
12183-719	Upper Tray for 19"W Rack, 3.5"D, Telescopes to adjust cable entry/exit
13183-719	Upper Tray for 19"W Rack, 6"D, Telescopes to adjust cable entry/exit
12185-719	Lower Single Tray for 19"W Rack, Telescopes to adjust cable entry/exit
12187-719	Lower Double Tray for 19"W Rack, Telescopes to adjust cable entry/exit
STEP 4: ACCESSORIZE	
Extended Fingers Bracket	
12891-703	Bracket, 7 RMU
Cable Spools	
12765-706	Spools for GVCS, Pack of 6
12766-707	Spools for vertical cabling sections with 2.5" diameter pass-through holes, Pack of 7

Build Your Own System: Pre-Packaged (As Shown on Page 7)

BUILD YOUR OWN SYSTEM: PRE-PACKAGED	
Global Standard Rack	
57001-703	Global Standard Pack, 19"W x 7"H Standard Rack + One 3.65"W x 7"H GVCS 
57002-703	Global Standard Pack, 19"W x 7"H Standard Rack + Two 3.65"W x 7"H GVCS
57003-703	Global Standard Pack, 19"W x 7"H Standard Rack + One 6"W x 7"H GVCS
57004-703	Global Standard Pack, 19"W x 7"H Standard Rack + Two 6"W x 7"H GVCS
High Density Patching Frame	
55100-703	19"W x 7"H, 45 RMU, 750 lb Static Load Rating
110 Customizable Frame	
12922-701	36.32"W x 84"H x 20.29"D, Single-Sided
12923-701	36.32"W x 84"H x 29.6"D, Double-Sided

Build Your Own System: Enclosed (As Shown on Page 8)

STEP 1: CHOOSE YOUR CPI CABINET	
M-Series MegaFrame® Cabinet System (1,600 Load Rating)	
M1030-712	19"W x 84"H x 30"D, 45 RMU, #12-24 Tapped Rails, Includes Top and Sides Plexiglass Front Door / Metal Rear Door
M1043-732	19"W x 84"H x 39"D, 45 RMU, Square-Punched Rails, Includes Top and Sides Vented Plexiglass Front Door / Perforated Metal Rear Door
M1032-702	19"W x 84"H x 30"D, 45 RMU, #12-24 Tapped Rails, No Doors, Tops or Sides
C-Series Slim Frame™ Cabinet System (1,600 Load Rating)	
C1053-732	19"W x 84"H x 36"D, 45 RMU, Square-Punched Rails, Includes Top and Sides Vented Plexiglass Front Door / Perforated Metal Rear Door
C1053-742	19"W x 84"H x 36"D, 45 RMU, Square-Punched Rails, Includes Top and Sides Perforated Metal Front Door / Perforated Metal Rear Door
T-Series SteelFrame™ Cabinet System (1,200 Load Rating)	
T2033-732	19"W x 84"H x 30"D, 45 RMU, Square-Punched Rails, Includes Top and Sides Vented Plexiglass Front Door / Perforated Metal Rear Door
T2033-742	19"W x 84"H x 30"D, 45 RMU, Square-Punched Rails, Includes Top and Sides Perforated Metal Front Door / Perforated Metal Rear Door
T2032-702	19"W x 84"H x 30"D, 45 RMU, #12-24 Tapped Rails, No Top, Sides or Doors
STEP 2: CONSIDER YOUR VERTICAL CABLING NEEDS	
Vertical Cable Manager	
12465-707	Wide Vertical Cabling Ring Section, 7'H (one included with each MegaFrame and T2 SteelFrame Cabinet)
11809-700	Narrow Vertical Cabling Ring Section, 7'H (one included with each SlimFrame and T1 SteelFrame Cabinet)
Vertical Cabling Ring Accessory Kit	
14068-701	Eight Additional 5.5"D x 2.3"W Cable Rings for Use With Wide Vertical Cable Manager
Wide Enhanced Vertical Cable Manager	
13170-700	4.75"W x 84"H x 8.77"D 
Narrow Enhanced Vertical Cable Manager	
13171-700	3.50"W x 84"H x 5.23"D
STEP 3: ADD HORIZONTAL CABLE MANAGERS	
19" Horizontal Wire Management Panel	
13070-719	19"W x 1 RMU x 6"D
Rack Cabling Manager	
11752-719	Small Rings, 19"W x 1.59"L x 1.25"D
11753-719	Medium Rings, 19"W x 3.0"L x 1.6"D
Horizontal Cable Tray	
10365-719	19"W x 2"H x 6"D
Large Horizontal Ring Panel	
11564-719	6"W x 2.8"H Heavy Duty Aluminum Rings on Panel for 19" Rack
Front-To-Back Cable Manager	
13169-701	1.74"W x 2.38"H, For Use With Enhanced Narrow Vertical Cable Manager 
13168-701	3.77"W x 2.38"H, For Use With Enhanced Wide Vertical Cable Manager
STEP 4: ACCESSORIZE	
23"-19" Rail Adapter Kit	
10587-701	Kit includes 12 Adapters for Converting 23" Rail to 19"
Saf-T-Grip® Reusable Cable Management Strap	
02006-201	Saf-T-Grip Strap, Open Loop Series, Pack of 25, 6"L
02009-201	Saf-T-Grip Strap, Open Loop Series, Pack of 25, 9"L
02012-201	Saf-T-Grip Strap, Open Loop Series, Pack of 25, 12"L

As the leading provider of structural support systems, CPI delights you with :

Quality Products

- A Total System Solution
- Standards-Compliant
- UL Listing and Certification
- Numerous Patent Awards
- Heavy-Duty Packaging

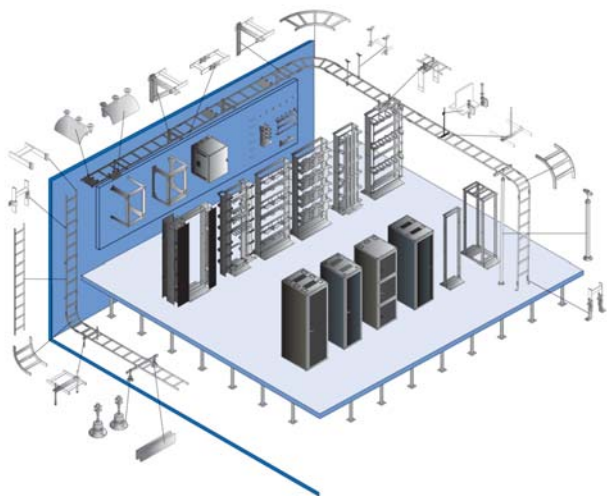
Quality Services

- Free Layout Services
- Detailed Drawings
- Bill of Materials
- Custom Products
- Online Design Tools

Quality People

- Motivated Employee-Owners
- Knowledgeable Salespeople
- Customer Service & Technical Support
- Distributor and Contractor Partners

The CPI Total Solutions Includes:



- Equipment Support
- Cable Management
- Cable Pathways
- Grounding & Bonding

- Security & Monitoring
- Thermal Management
- Power Distribution
- Seismic Bracing

Find more information about CPI Cable Management Systems at
www.chatsworth.com/cablemanagement
800-834-4969
techsupport@chatsworth.com



**CHATSWORTH
PRODUCTS, INC.**